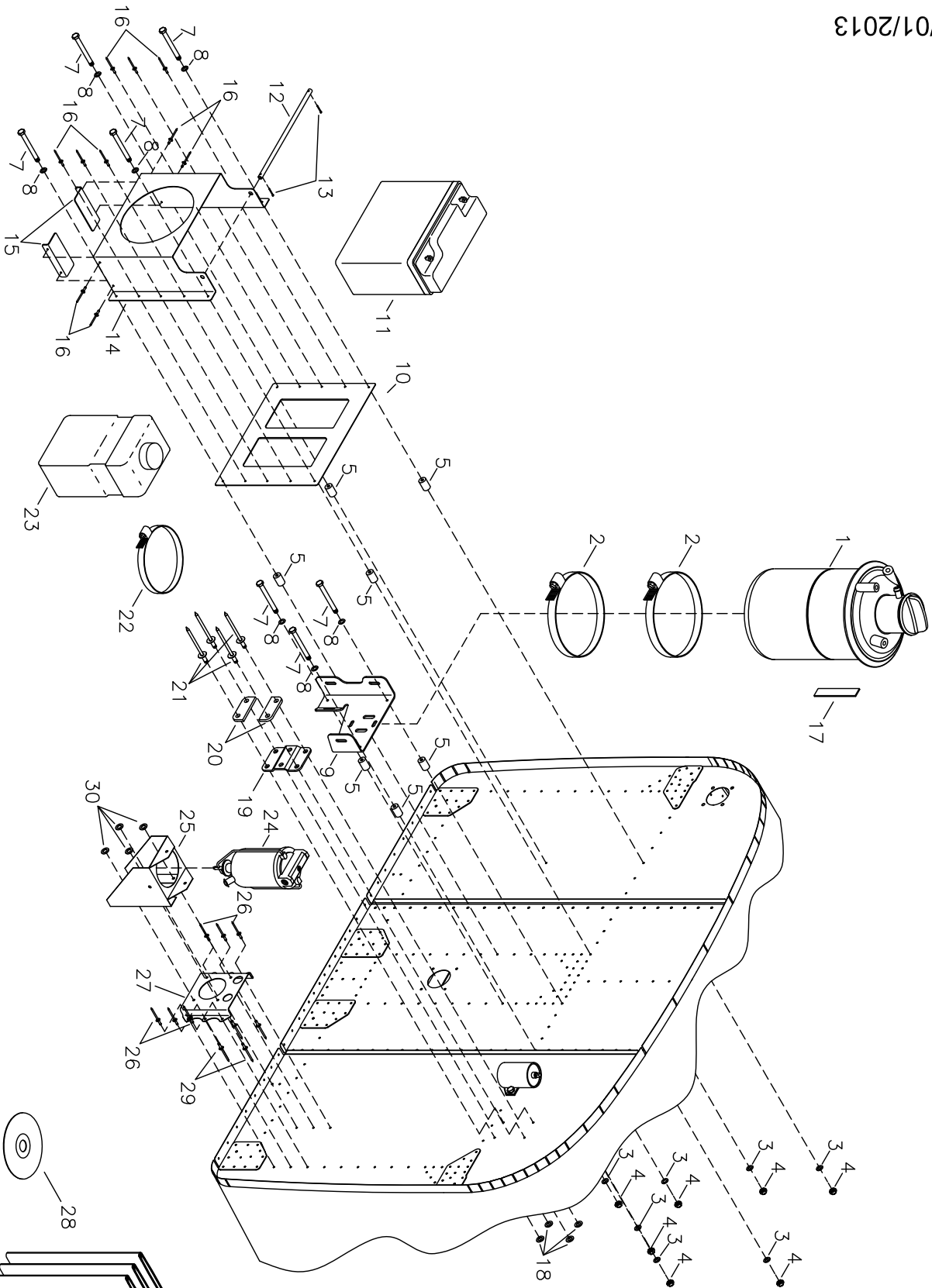
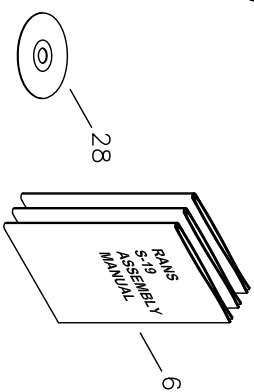


13 – ROTAX 912ULS ENGINE INSTALLATION

ROTAX 912ULS - FIREWALL ITEMS INSTALLATION	13-01 - 13-02
ROTAX 912ULS - ENGINE MOUNT INSTALLATION	13A-01 - 13A-02
ROTAX 912ULS - FUEL SYSTEM INSTALL - FIREWALL FWD	13B-01 - 13B-02
ROTAX 912ULS - COOLING SYSTEM INSTALLATION	13C-01 - 13C-02
ROTAX 912ULS - LUBRICATION SYSTEM INSTALLATION	13D-01 - 13D-02
ROTAX 912ULS - MUFFLER / HEATER WRAP ASSY & INSTALL	13E-01 - 13E-02
ROTAX 912ULS - CABIN HEATER INSTALLATION	13E-03 - 13E-04
ROTAX 912ULS - THROTTLE & CHOKE CABLE INSTALLATION	13F-01 - 13F-02
ROTAX 912ULS - ENGINE ELECTRICAL	13G-01 - 13G-02
ROTAX 912ULS - ANALOG INSTRUMENTS/ELECTRICAL	13G-03 - 13G-04
ROTAX 912ULS - SENSENICH COMPOSITE PROPELLER	13H-01 - 13H-02
ROTAX 912ULS - OPTIONAL AIRBOX ASSEMBLY	13I-01 - 13I-02
ROTAX 912ULS - OPTIONAL REMOTE CHARGING POST	13J-01 - 13J-02



ROTAX S-19 VENTERRA
ROTAX 912ULS
FIREWALL ITEMS INSTALLATION



MDS135
 REV. A

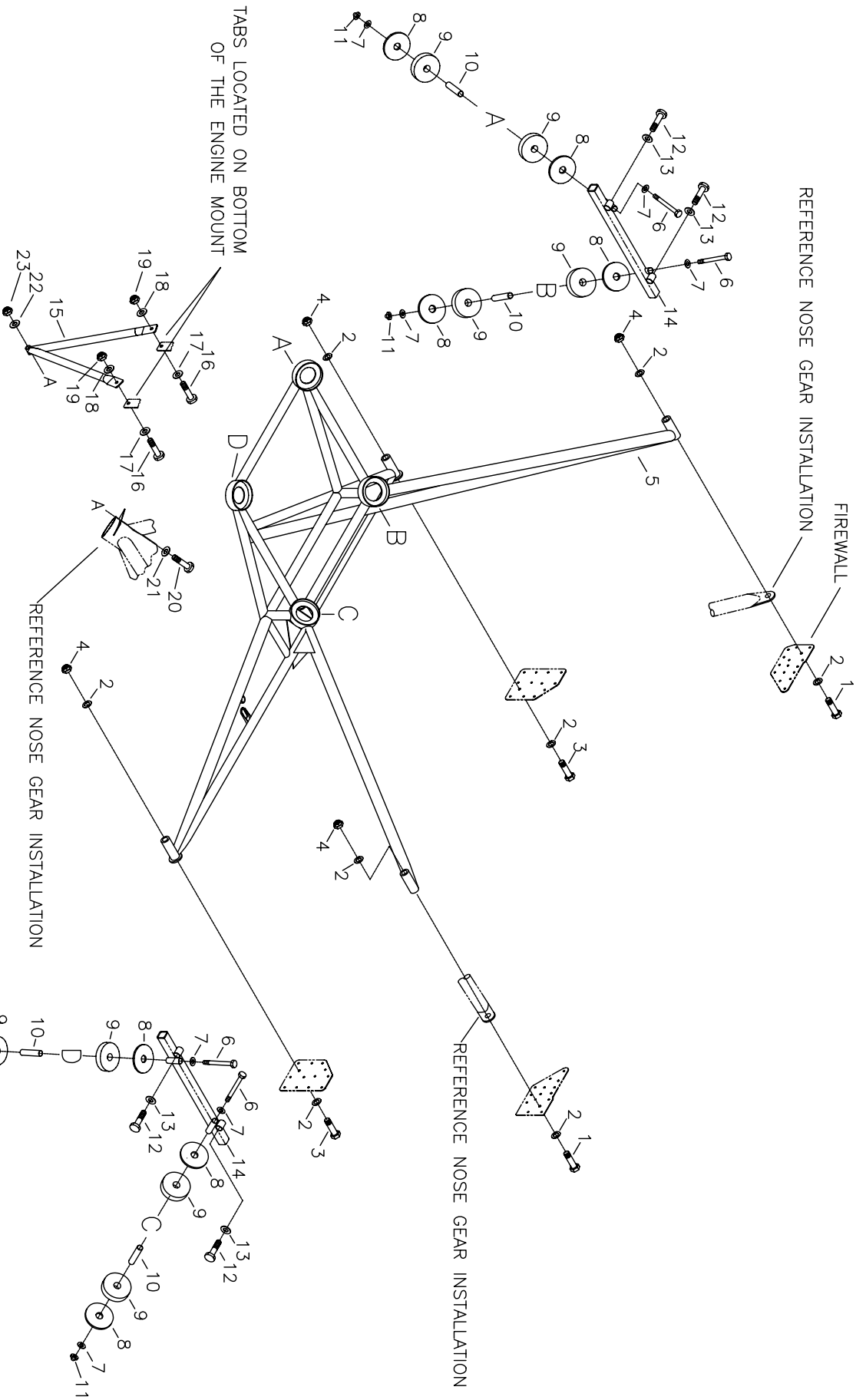
Shown with Optional Gascolator Install

#	DESCRIPTION	PART NUMBER	QUANTITY
1.	Oil Tank *	----	0
2.	Hose Clamp - 6"	5-5288	2
3.	3/16" Thick Washer	AN960-10	7
4.	3/16" Tensile Nut	AN365-1032A	7
5.	3/8" x 0.058" x 1/2" Aluminum Bushing ***	KAAC0044-3	0
6.	S-19 Assembly Manual on CD - 912uls Engine	S-19 Assembly Manual	1
7.	3/16" Bolt	AN3-11A	7
8.	3/16" Thin Washer	AN960-10L	7
9.	Oil Bottle Mount	KPPW0261	1
10.	Battery Box Mount Plate	BAT-BOX-2	1
11.	Battery ****	PS12150-NB	0
12.	Battery Bar	BAT-BAR-503/582	1
13.	Cotter Pin - Small	MS24665-134	2
14.	Battery Box - Front Plate	BAT-BOX-1	1
15.	Battery Box - Support Angles	BAT-BOX-3	2
16.	1/8" Stainless Steel Rivet - Cherry Q	CCPQ-42	10
17.	1" Black Foam Tape	KSAC0011	3 in.
18.	1/8" Small Brass Washer	AN960-B4	4
19.	Mount Bracket - Coolant Recovery Bottle	KPPW0231	1
20.	Spacer Shim - Mount Bracket	KPPW0230	2
21.	1/8" Stainless Steel Rivet - Cherry Q	CCPQ-44	4
22.	Hose Clamp - 4"	5-5256	1
23.	Overflow Bottle	KSPW0072	1
24.	Gascolator **	----	0
25.	Gascolator Bracket **	----	0
26.	1/8" Stainless Steel Rivet - Cherry Q *****	CCPQ-41	6
27.	Gascolator Mount *****	KPPW0277	1
28.	S-19 Installation DVD - 912uls Engine	KPPW0285	1
29.	1/8" Stainless Steel Rivet - Cherry Q *****	CCPQ-42	4
30.	1/8" Small Brass Washer *****	AN960-B4	4

* Supplied with engine ** Referenced from Fuel System Installation - Firewall Forward

*** Builder fabricates from raw stock **** Available from RANS Parts Dept

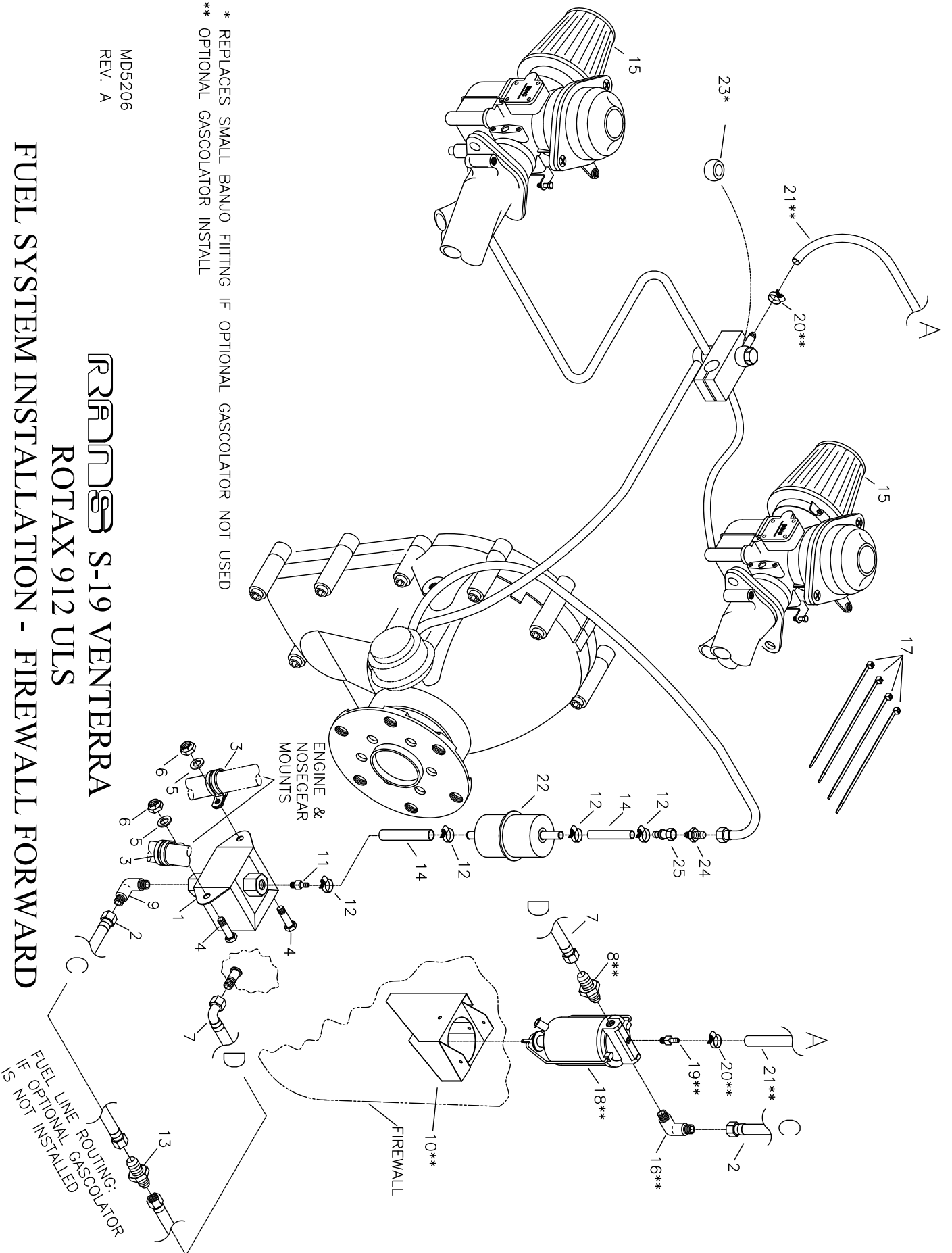
***** Optional Gascolator Install



RRRND S-19 VENTERRA
ROTAX 912ULS
ENGINE MOUNT INSTALLATION

MD5084

#	DESCRIPTION	PART NUMBER	QUANTITY
1.	5/16" Bolt	AN5-22A	2
2.	5/16" Thick Washer	AN960-516	8
3.	5/16" Bolt	AN5-21A	2
4.	5/16" Steel Tensile Nut	AN365-524C	4
5.	Engine Mount	KPPW0274	1
6.	3/8" Bolt	AN6-33A	4
7.	3/8" Thick Washer	AN960-616	8
8.	Washer	912DONUT-2	8
9.	Rubber Washer	912DONUT-3	8
10.	Bushing	912DONUT-4	4
11.	3/8" Loc-Nut	MS21045-6	4
12.	10mm Bolt	875-550	4
13.	10mm Loc-Washer	945-753	4
14.	912 Engine Attachment	EG-FEA-912	2
15.	Engine Mount Brace	KPPW0273	1
16.	3/16" Bolt	AN3-5A	2
17.	3/16" Thin Washer	AN960-10L	2
18.	3/16" Thick Washer	AN960-10	2
19.	3/16" Tensile Nut	AN365-1032A	2
20.	1/4" Bolt	AN4-10A	1
21.	1/4" Thin Washer	AN960-416L	1
22.	1/4" Thick Washer	AN960-416	1
23.	1/4" Tensile Nut	AN365-428A	1



* REPLACES SMALL BANJO FITTING IF OPTIONAL GASCOLATOR NOT USED
 ** OPTIONAL GASCOLATOR INSTALL

MD5206
 REV. A

ROTAX S-19 VENTERRA
ROTAX 912 ULS

FUEL SYSTEM INSTALLATION - FIREWALL FORWARD

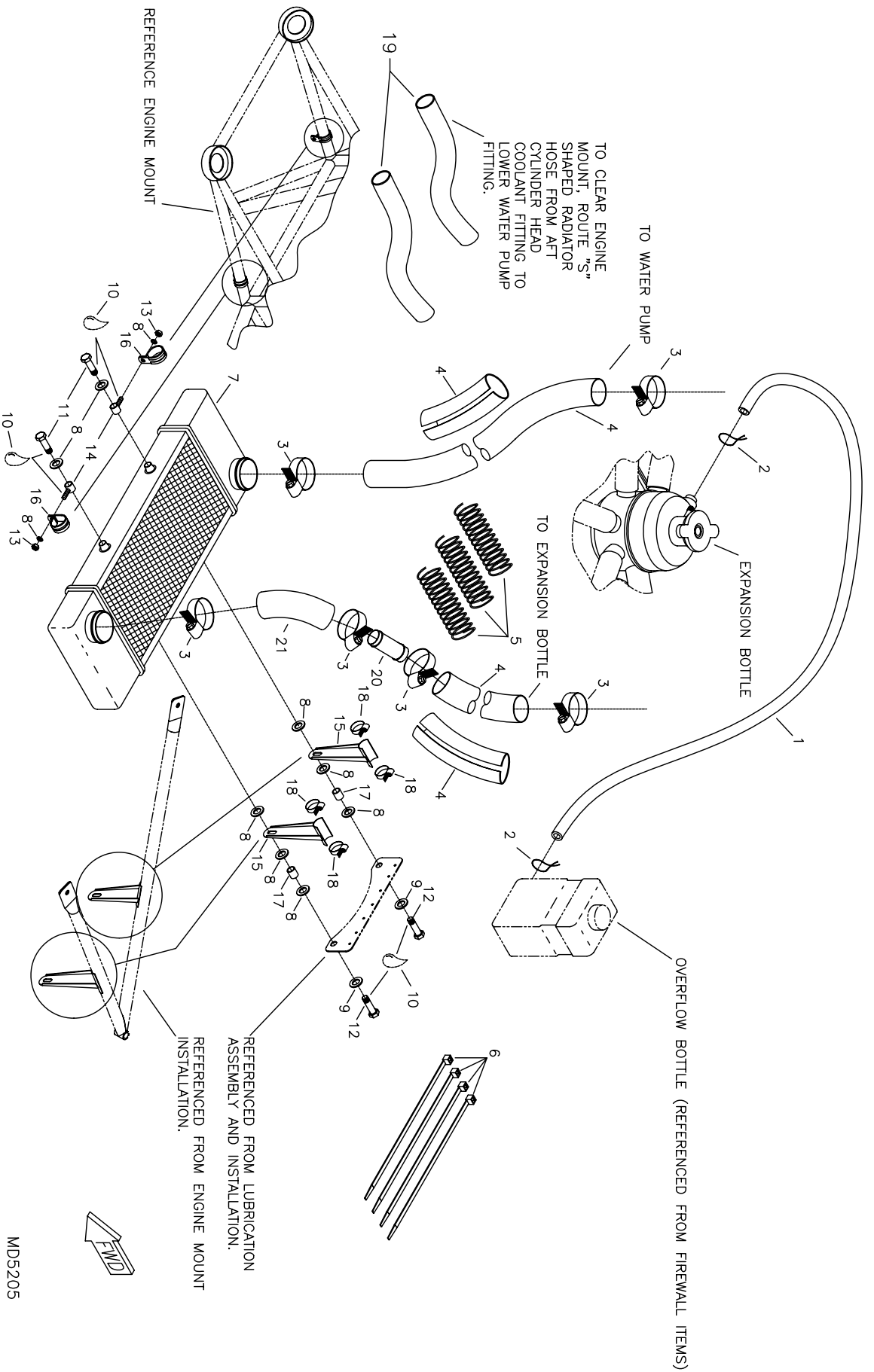
Shown with Optional Gascolator Install

#	DESCRIPTION	PART NUMBER	QUANTITY
1.	Fuel Pump	KSPW0077	1
2.	Fuel Line - Gascolator to Fuel Pump	KPFS0091	1
3.	3/4" Cushioned Clamp	MS21919-DG12	2
4.	3/16" Bolt	AN3-4A	2
5.	3/16" Thin Washer	AN960-10L	2
6.	3/16" Shear Nut	AN364-1032A	2
7.	Fuel Line - Firewall to Gascolator	KPFS0090	1
8.	Straight Fitting ***	AN816-6D	1
9.	90-Degree Fitting	AN822-6-2D	1
10.	Gascolator Bracket ***	KSPW0066	1
11.	Straight Fitting	8330	1
12.	Hose Clamp - 5/8"	5-6202	4
13.	Union - Flared Tube (-1 - Optional Gascolator)	AN815-6D	1
14.	1/4" Fuel Line *	-----	0
15.	Air Filter * **	EG-AF-912	0
16.	90-Degree Fitting ***	AN822-6D	1
17.	Nylon Tie	N-TIES	4
18.	Gascolator ***	KSPW0067	1
19.	Straight Fitting ***	8330	1
20.	Hose Clamp - 5/8" ***	5-6202	2
21.	1/4" Black Fuel Line ***	KSFS0002	3 ft
22.	Fuel Filter * ****	-----	0
23.	Bushing (-1 - Optional Gascolator)	BPBK0018	1
24.	Reducer - External Thread - Flared Tube	AN919-6D	1
25.	1/4" Hose Fitting	30682-4-4	1

* Builder Supplied ** Available from RANS Parts Dept

*** Optional Gascolator Install

**** Contact ROTAX for Recommended Fuel Filter



MD5205

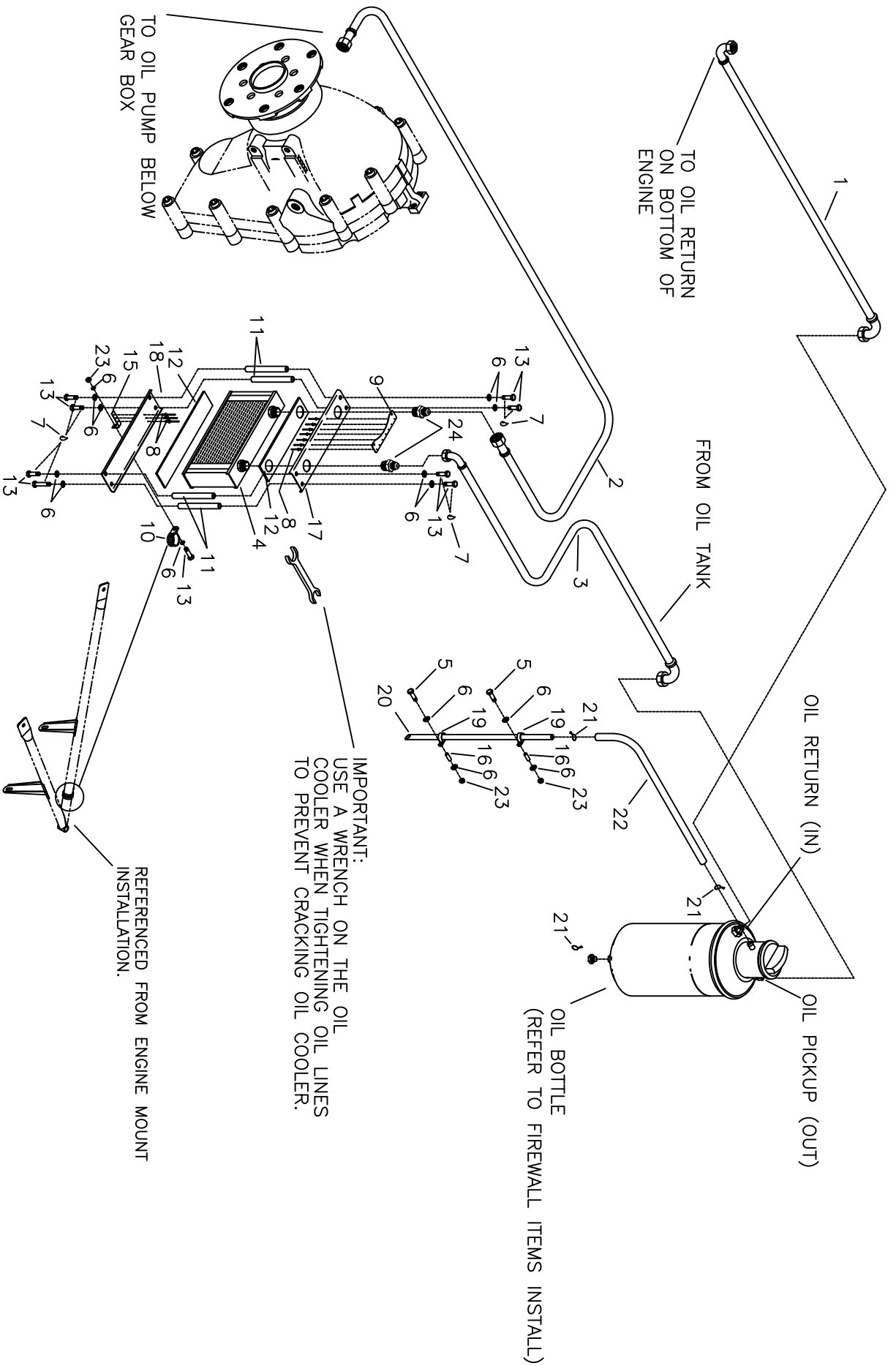
ROTAX S-19 VENTERRA
ROTAX 912ULS
COOLING SYSTEM INSTALLATION

#	DESCRIPTION	PART NUMBER	QUANTITY
1.	5/16" Overflow Hose	EGCS-OFH	3 ft.
2.	Safety Wire *	----	0
3.	Hose Clamp - 1 1/2"	5-5216	6
4.	Radiator Hose - 1"	RADIATOR HOSE	3 ft.
5.	Hose Spring	EGCS-HS	3
6.	Nylon Tie	N-TIES	4
7.	Radiator	KSPW0071	1
8.	1/4" Thick Washer	AN960-416	10
9.	1/4" Thin Washer	AN960-416L	2
10.	Loctite *	----	0
11.	6MM Bolt	M6X16 BOLT	2
12.	6MM Bolt	M6X30 BOLT	2
13.	6mm Hex Nut	6MM HEX NUT	2
14.	Radiator Mount	KPPW0278	2
15.	Radiator Mount	KPPW0279	2
16.	5/8" Cushioned Clamp	MS21919-DG10	2
17.	3/8" x 0.058" x 1/2" Aluminum Bushing **	KAAC0044-3	0
18.	Hose Clamp - 7/8"	5-6203	4
19.	Pre-formed Radiator "S" Hose	KSPW0025	2
20.	Cooling Tube Union	KPPW0189	1
21.	Pre-formed Radiator "U" Shaped Hose ***	KSPW0075	1

* Builder Supplied

** Builder fabricates from raw stock

*** Builder modifies



ROTAX S-19 VENTERRA
ROTAX 912ULS
LUBRICATION ASSEMBLY AND INSTALLATION

#	DESCRIPTION	PART NUMBER	QUANTITY
1.	Oil Line Assembly - ROTAX 912 ULS	KSPW0133	1
2.	Oil Line Assembly - ROTAX 912 ULS	KSPW0134	1
3.	Oil Line Assembly - ROTAX 912 ULS	KSPW0138	1
4.	Oil Cooler	KSPW0085	1
5.	3/16" Bolt	AN3-11A	2
6.	3/16" Thin Washer	AN960-10L	14
7.	Loctite **	----	0
8.	1/8" Stainless Steel Rivet - Flush	CCC-42	10
9.	Oil Cooler Mount Bracket	KPPW0271	1
10.	1/2" Cushioned Clamp	MS21919-DG8	1
11.	Threaded Bushing - Oil Cooler	KPPW0280	4
12.	.093 Silicone Sheet *	KPPW0254	2
13.	3/16" Bolt	AN3-4A	9
14.	1/8" Stainless Steel Rivet - Cherry Q	CCPQ-42	7
15.	Oil Cooler Mount Strap ***	KAAC0044-13	1
16.	3/8" x 0.058" x 3/4" Aluminum Bushing ***	KAAC0044-3	0
17.	Oil Cooler Mount - Upper	KPPW0272	1
18.	Oil Cooler Mount - Lower	KPPW0276	1
19.	Plain Clamp	AN742-D6	2
20.	3/8" x .035" Aluminum Tube *	KAAC0044-14	1
21.	Safety Wire **	----	0
22.	Medium Temperature Tubing	KSPW0069	2 ft.
23.	3/16" Shear Nut	AN364-1032A	3
24.	Oil Cooler Adaptor	KSPW0112	2

* Builder Modifies

** Builder Supplied

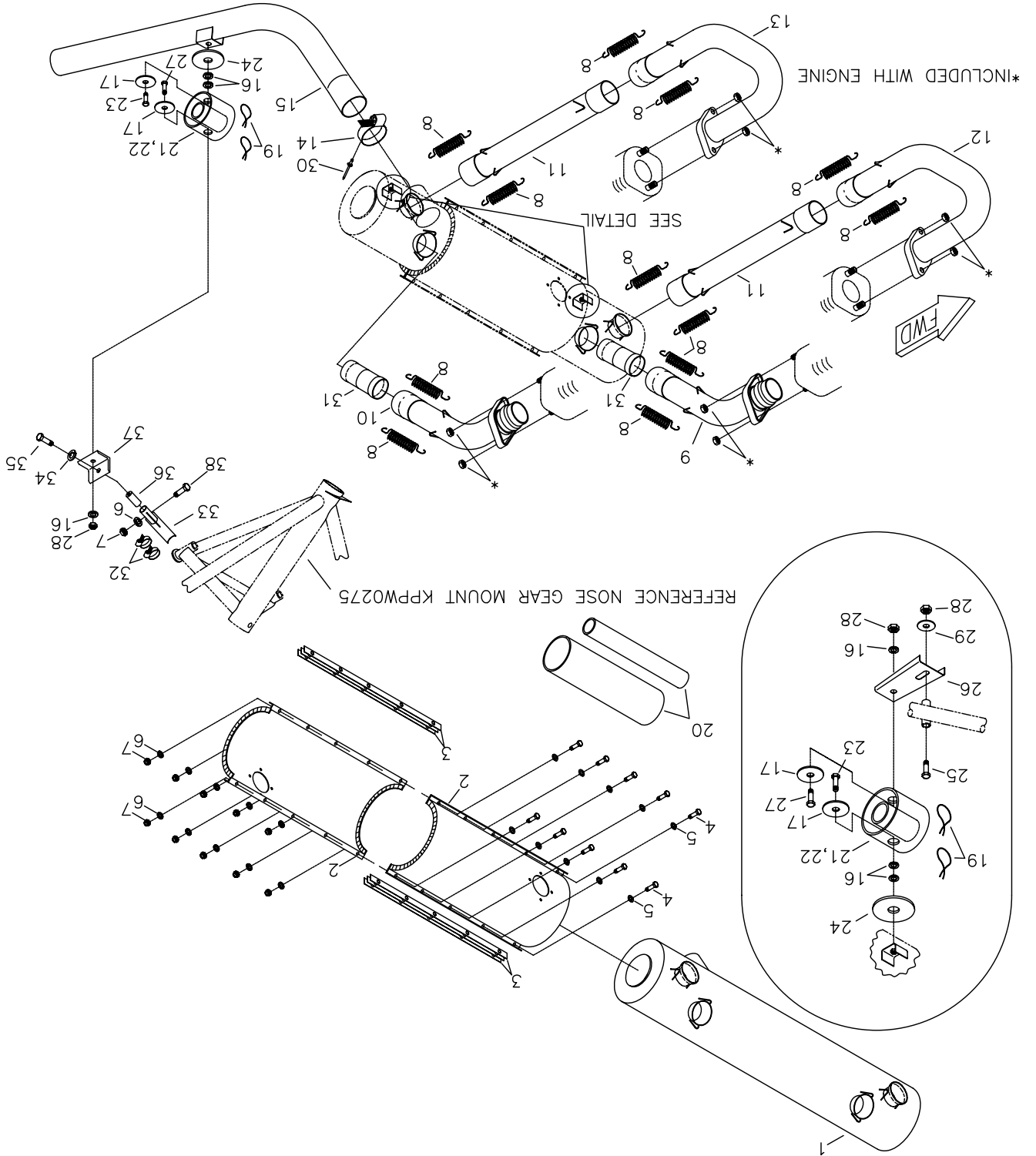
*** Builder fabricates from raw stock

4/1/2011

REV. A

ROTAX 912ULS MUFFLER / HEATER WRAP ASSEMBLY AND INSTALLATION

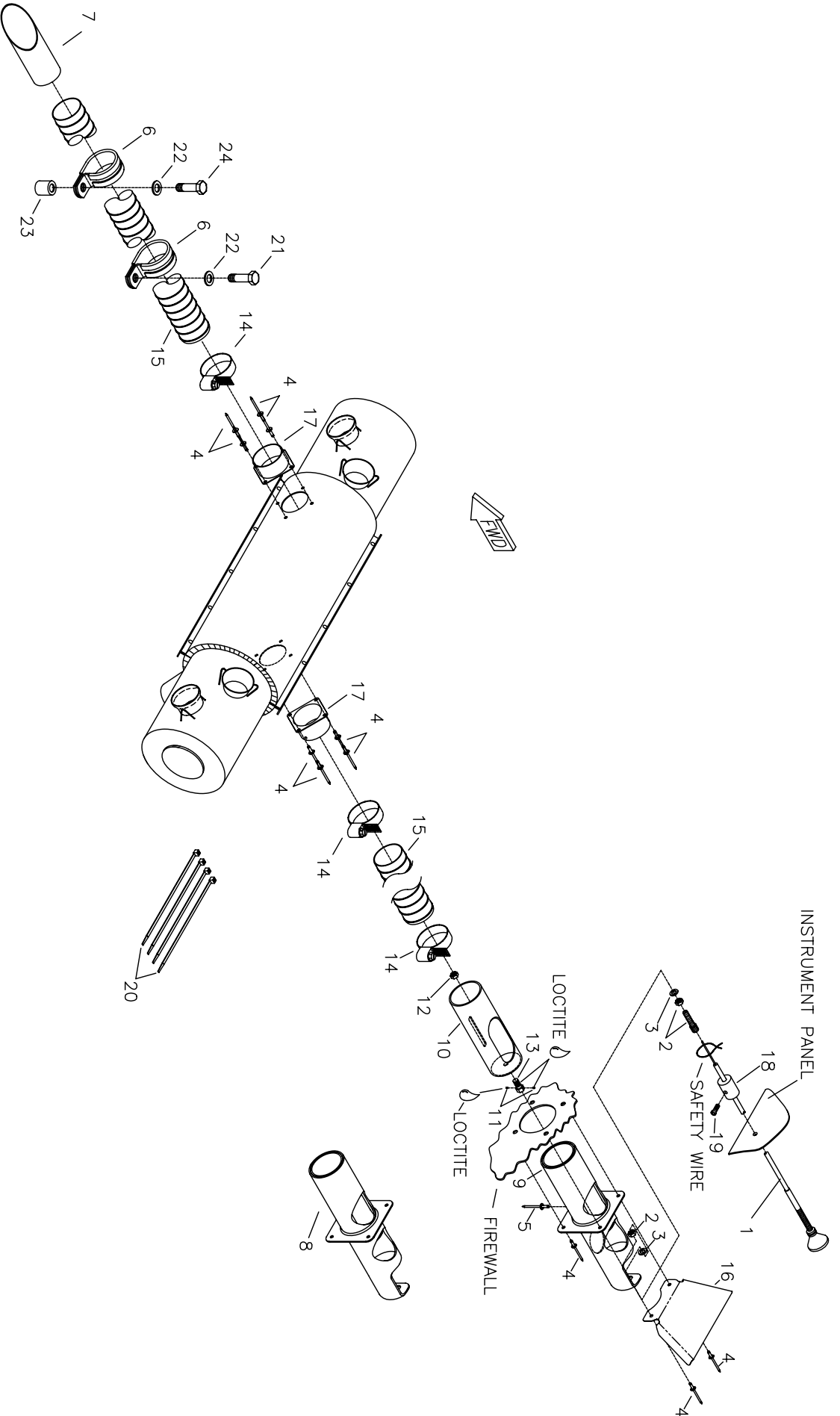
MD5201



#	DESCRIPTION	PART NUMBER	QUANTITY
1.	S-19 Muffler	KPEX0071	1
2.	Heater Wrap	KPSY0070	2
3.	Shim - Heater Wrap	KPSY0071	8
4.	3/16" Bolt	AN3-4A	10
5.	3/16" Thin Washer	AN960-10L	10
6.	3/16" Thick Washer	AN960-10	11
7.	3/16" Steel Shear Nut	AN364-1032C	11
8.	Muffler Spring	KSEX0002	12
9.	Aft Top Pipe - RH	KPEX0069	1
10.	Aft Top Pipe - LH	KPEX0070	1
11.	Forward Manifold #2 Pipe	KPEX0068	2
12.	Forward Manifold #1 Pipe - RH	KPEX0022	1
13.	Forward Manifold #1 Pipe - LH	KPEX0020	1
14.	Hose Clamp - 2 1/4"	5-5228	1
15.	Tail Pipe Extension	KPEX0067	1
16.	1/4" Thick Washer	AN960-416	8
17.	Formed Washer	KPAC0053	6
18.	6mm Hex Nut	6MM HEX NUT	3
19.	Safety Wire *	-----	0
20.	912 Muffler Raw Stock Kit	KAAC0017	1
21.	Rubber Hose - 3/4" o.d. x 1 3/8" **	KAAC0017-1	0
22.	Rubber Hose - 1 1/4" o.d. x 1 3/8" **	KAAC0017-2	0
23.	6MM Bolt	M6X20 BOLT	6
24.	1/8" Aluminum Washer	EG-AW	3
25.	1/4" Bolt	AN4-16A	2
26.	Muffler Attach Channel	KPEX0027	2
27.	1/4" Plain Bolt	KSHW0016	3
28.	1/4" Steel Shear Nut	AN364-428C	5
29.	1/4" Large Washer	AN970-4	2
30.	1/8" Stainless Steel Rivet - Cherry Q	CCPQ-44	1
31.	Muffler Canister Coupler	KPEX0072	2
32.	Hose Clamp - 7/8"	5-6203	2
33.	Tail Pipe Support	KPEX0073	1
34.	1/4" Lock Washer	AN935-416L	1
35.	1/4" Bolt	AN4-5A	1
36.	Tail Pipe Support - Bushing	KPEX0074	1
37.	Tail Pipe Support - Angle	KPEX0075	1
38.	3/16" Bolt	AN3-10A	1

* Builder Supplied

** Builder fabricates from raw stock



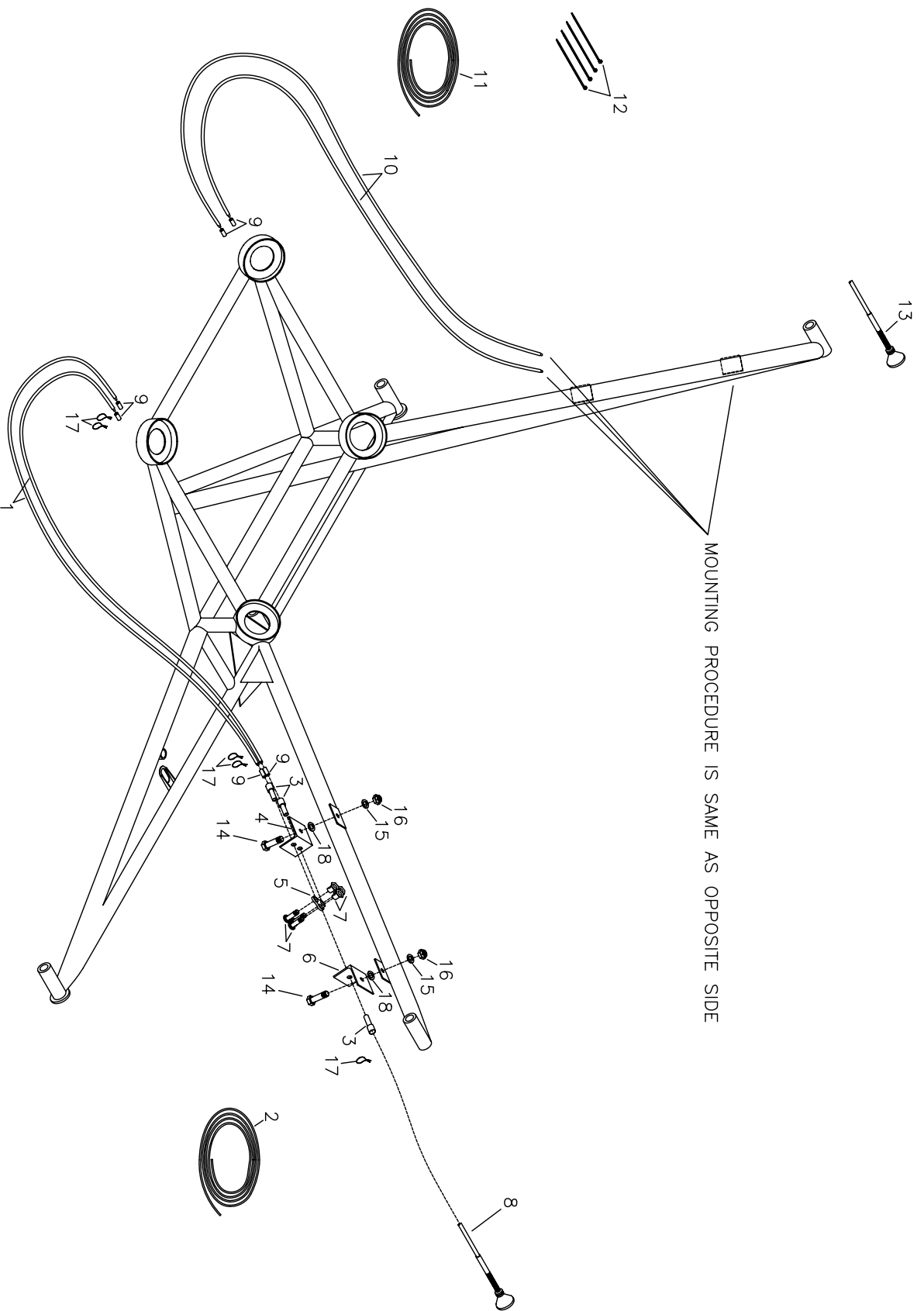
ROTAX S-19 VENTERRA
ROTAX 912ULS
CABIN HEATER INSTALLATION

MDS202

#	DESCRIPTION	PART NUMBER	QUANTITY
1.	Control Cable	4-336	1
2.	Adjustable Cable Ferrule	12553	1
3.	1/4" Plastic Washer	PW-4	2
4.	1/8" Stainless Steel Rivet - Cherry Q	CCPQ-42	12
5.	1/8" Aluminum Rivet - Cherry Q *	AAPQ-42	0
6.	1-1/2" Cushioned Clamp	MS21919-DG24	2
7.	Inlet Tube	H-OT	1
8.	Air Diverter Assembly	KASY0006	1
9.	Air Diverter - Slide *	KASY0006-1	0
10.	Air Diverter - Body *	KASY0006-2	0
11.	Set Screw	KSHW0043	2
12.	6mm Hex Nut	6MM HEX NUT	1
13.	Reverse Cable Stop	BPHW0006	1
14.	Hose Clamp - 1 3/4"	5-5220	3
15.	1 1/2" Heater Duct / Creet Hose	CREET HOSE	5 ft.
16.	Cabin Heat Shield	KPFU0653	1
17.	Heater Flange Assembly	KPSY0030	2
18.	Cable Friction Block	T-STOP	1
19.	Socket Head Cap Screw	T-SC	1
20.	Nylon Tie - Long	Long-N-Ties	4
21.	6MM Bolt	M6X16 BOLT	1
22.	1/4" Thin Washer	AN960-416L	2
23.	3/8" x 0.058" x 1/2" Aluminum Bushing **	KAAC0044-3	0
24.	6MM Bolt	M6X30 BOLT	1

* Part of Air Diverter Assembly

** Builder fabricates from raw stock



ROTAX S-19 VENTERRA
ROTAX 912ULS
THROTTLE AND CHOKE CABLE INSTALLATION

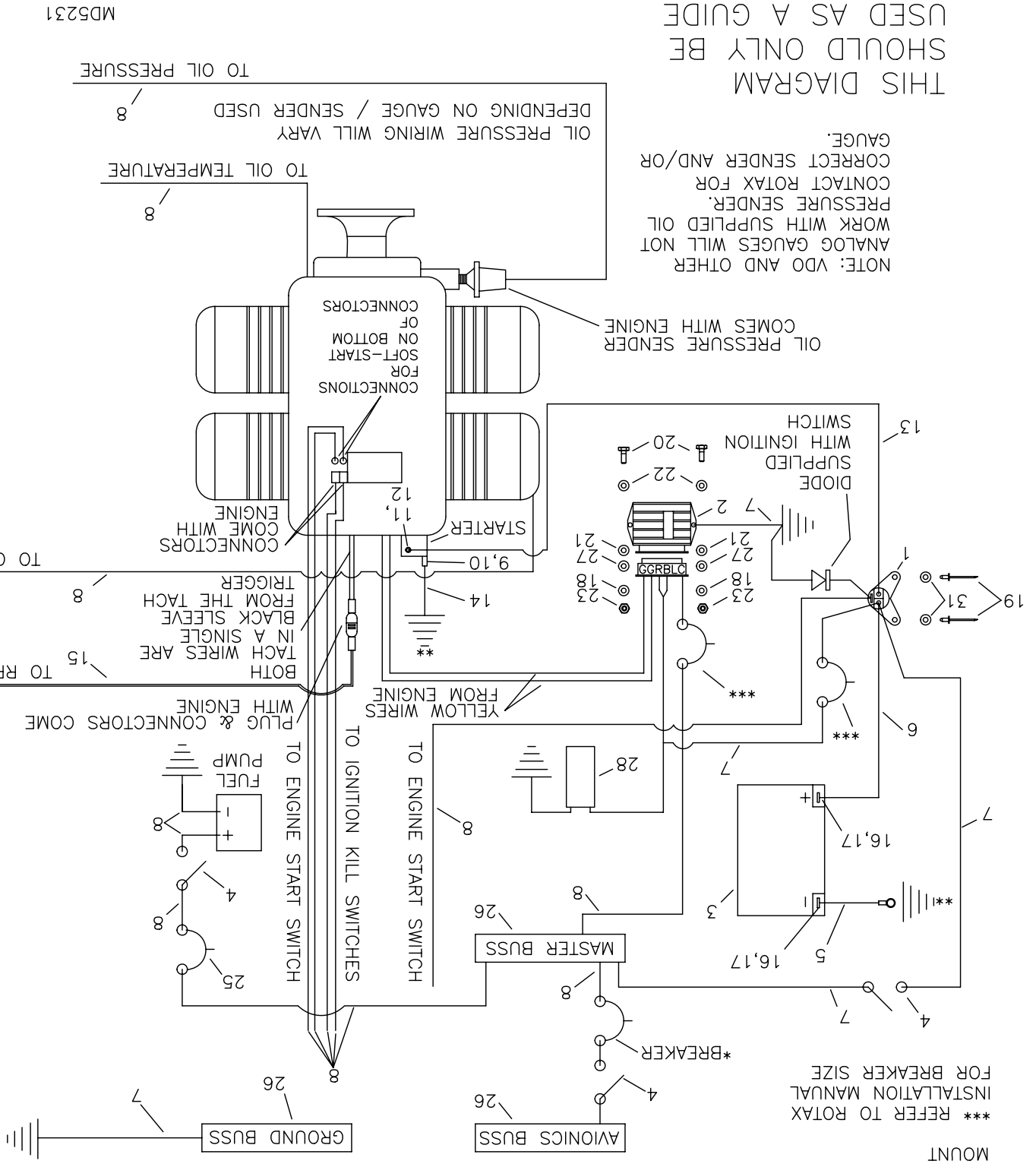
MD5453

#	DESCRIPTION	PART NUMBER	QUANTITY
1.	Throttle Cable Housing	EG-T-CAB-H	8 ft.
2.	Throttle Cable	EG-T-CAB	2
3.	Cable Conduit Ferrule	2394	6
4.	Double Cable Stop	KPCS0249	2
5.	Mixer Plate	KPPW0076	2
6.	Cable Stop	KPCS0248	2
7.	Wire Swivel/Screw Stop	2361	6
8.	Throttle	KSCS0022	1
9.	Cable Ferrule Cap	ENDCAP-12000	8
10.	Choke Cable Housing	CK-CAB-H	8 ft.
11.	Choke Cable	BC-105	2
12.	Nylon Tie	N-TIES	6
13.	Control Cable	4-336	1
14.	3/16" Bolt	AN3-5A	4
15.	3/16" Thick Washer	AN960-10	4
16.	3/16" Shear Nut	AN364-1032A	4
17.	Safety Wire *	----	0
18.	3/16" Thin Washer	AN960-10L	4

* Builder Supplied

* AMPERAGE TO BE DETERMINED BY BUILDER
** GROUND TO TAB ON ENGINE MOUNT
*** REFER TO ROTAX INSTALLATION MANUAL FOR BREAKER SIZE

DUE TO THE WIDE SELECTION OF SWITCHES, CIRCUIT BREAKERS AND CONNECTORS WHICH MAY BE USED TO CUSTOMIZE YOUR AIRCRAFT, THESE ITEMS ARE "BUILDER SUPPLIED."



NOTE: VDO AND OTHER ANALOG GAUGES WILL NOT WORK WITH SUPPLIED OIL PRESSURE SENDER. CONTACT ROTAX FOR CORRECT SENDER AND/OR GAUGE.

OIL PRESSURE SENDER COMES WITH ENGINE

MDS231

RRRDS S-19 VENTERA ROTAX 912ULS ENGINE ELECTRICAL

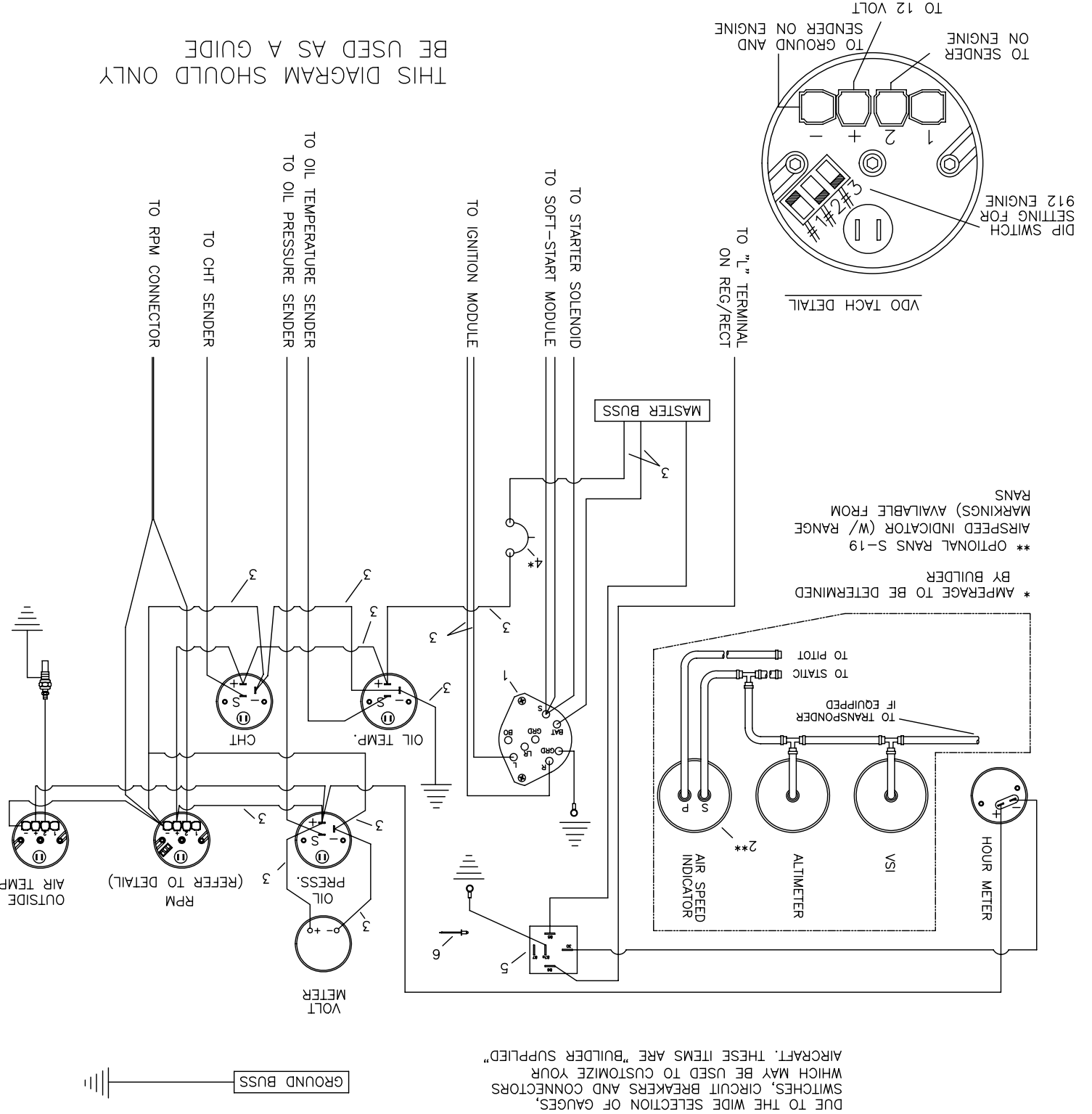
#	DESCRIPTION	PART NUMBER	QUANTITY
1.	Solenoid *	----	0
2.	Regulator/Rectifier *	----	0
3.	Battery **	----	0
4.	Switch ***	----	0
5.	Battery / Ground Cable	KAES0008	1
6.	Battery / Solenoid Cable	KAES0009	1
7.	12 Gauge Wire ***	----	0
8.	14 Gauge Wire ***	----	0
9.	1/4" Bolt	AN4-10A	1
10.	1/4" Steel Shear Nut	AN364-428C	1
11.	1/4" Lock Washer	AN935-416L	2
12.	6mm Hex Nut	6MM HEX NUT	1
13.	Solenoid / Starter Cable	KAES0010	1
14.	Starter / Ground Cable	KAES0011	1
15.	2 Plex 20 Gauge Wire ***	----	0
16.	3/16" Steel Shear Nut	AN364-1032C	2
17.	3/16" Bolt	AN3-3A	2
18.	3/16" Thick Washer	AN960-10	4
19.	3/16" Aluminum Rivet - Cherry Q	AAPQ-62	2
20.	3/16" Bolt	AN3-7A	2
21.	#10 Stainless Steel Washer	BSHW0022	2
22.	3/16" Thin Washer	AN960-10L	2
23.	3/16" Shear Nut	AN364-1032A	2
24.	Thread Sealant ***	----	0
25.	5 Amp Breaker ***	----	0
26.	Electrical Buss Bar *** *****	AMW 636	0
27.	3/8" x 0.058" x 3/16" Aluminum Bushing ****	KAAC0044-3	0
28.	Capacitor - 22,000 microFarad / 25v ***	----	0

* Supplied with Engine ** Referenced from Firewall Items Installation
 *** Builder Supplied ***** Builder fabricates from raw stock
 ***** Available from RANS Parts Dept

RRMS S-19 VENTURA ROTAX 912ULS ANALOG INSTRUMENTS/ELECTRICAL - SAMPLE SCHEMATIC

04/01/2011

MD5231

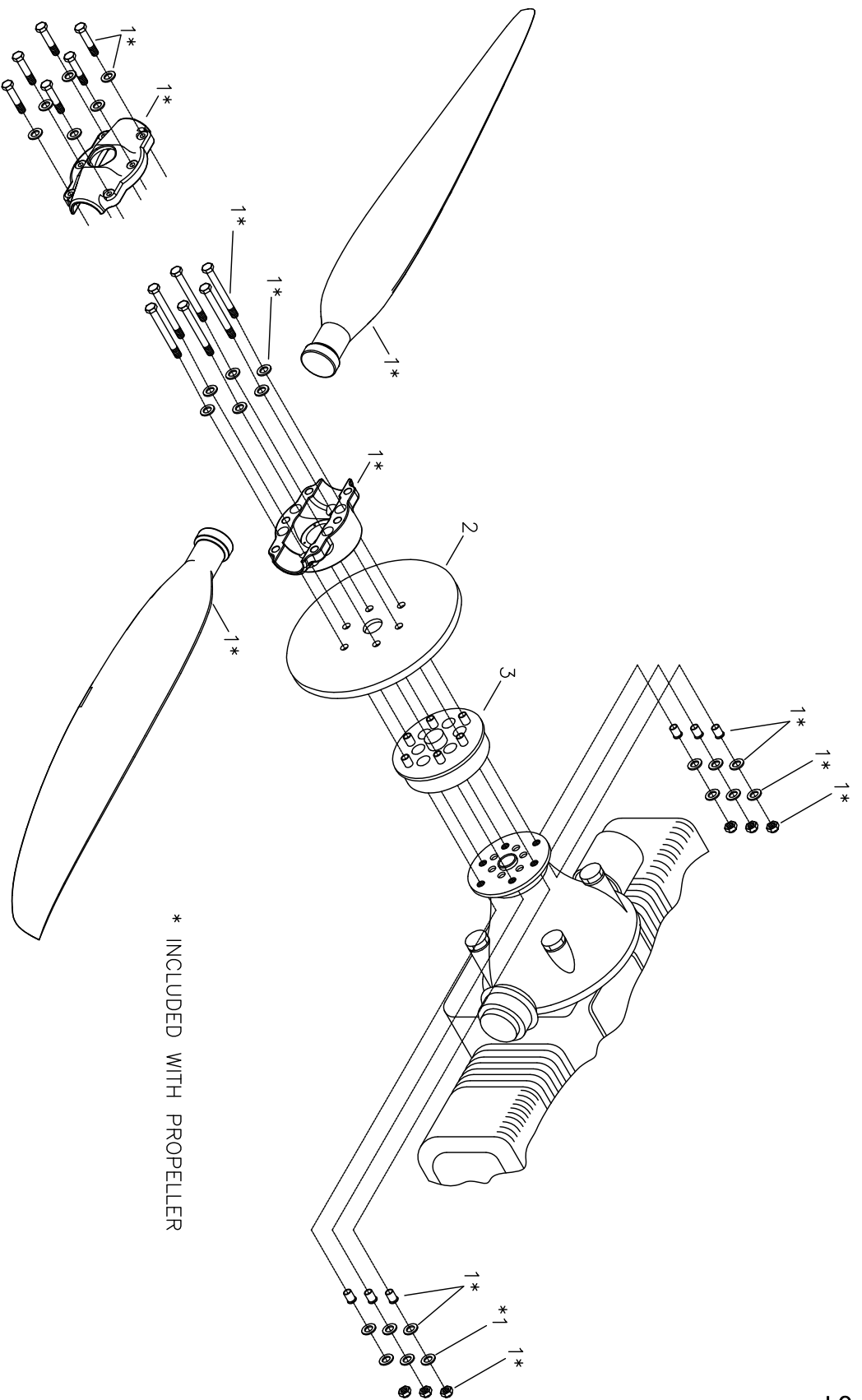


Sample Schematic

#	DESCRIPTION	PART NUMBER	QUANTITY
1.	Switch - Ignition * **	KSES0027	0
2.	Optional RANS S-19 Airspeed Indicator - 3-1/8" * **	KSAV0020	0
2.	Optional RANS S-19 Airspeed Indicator - 2-1/4" * **	KSAV0021	0
3.	14 Gauge Wire *	-----	0
4.	Breaker *	-----	0
5.	Hour Meter Relay Assembly	KAES0016	1
6.	3/16" Aluminum Rivet - Cherry Q	AAPQ-62	1

* Builder Supplied

** Optional - available from RANS Parts Dept



* INCLUDED WITH PROPELLER

ROTAX S-19 VENTERRA
ROTAX 912U LS
SENSENICH COMPOSITE PROPELLER INSTALLATION

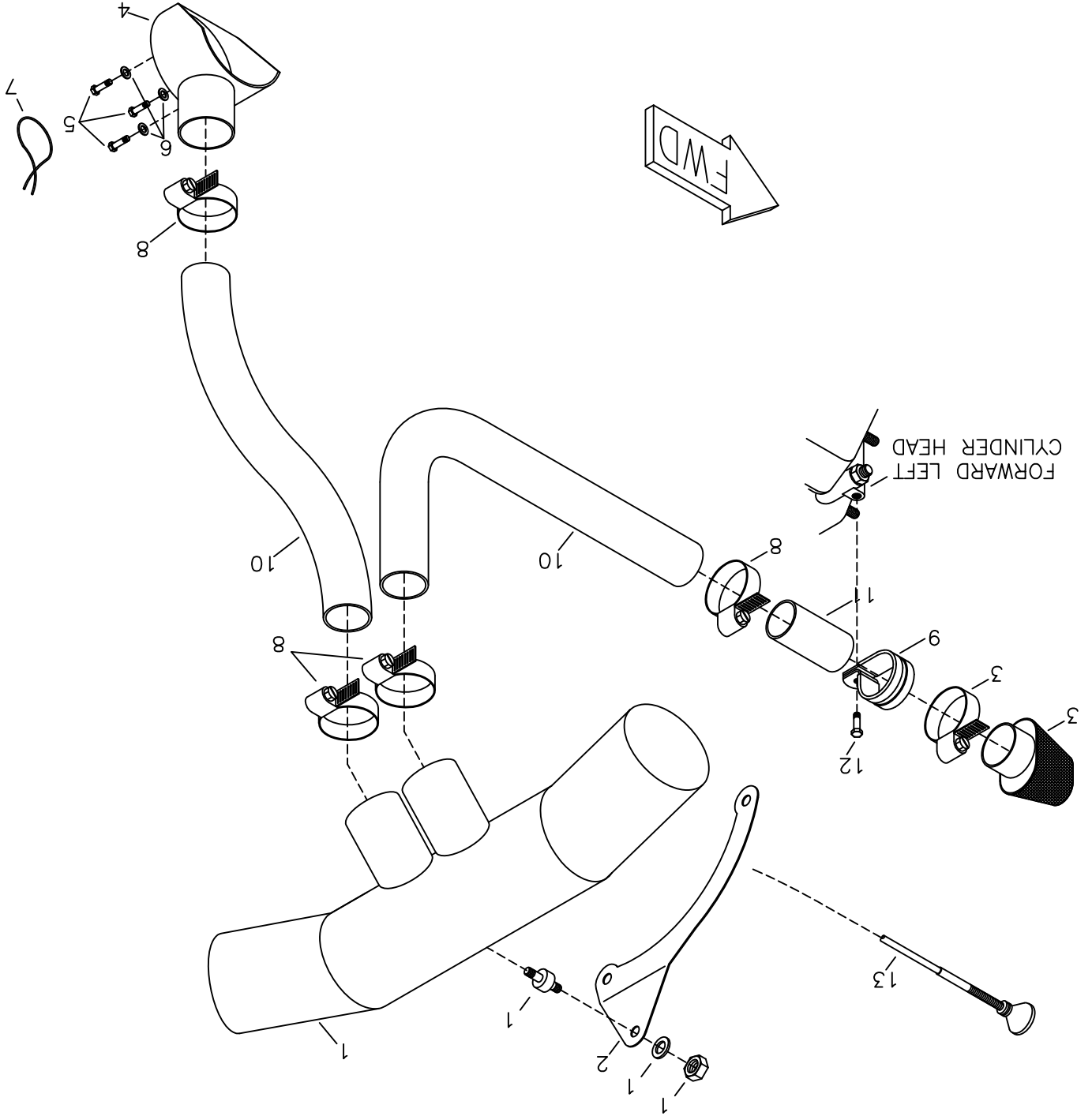
MD5147
REV. A

#	DESCRIPTION	PART NUMBER	QUANTITY
1.	Sensenich Composite Propeller Kit	KSPW0084	1
2.	Spinner Backing Plate - 912 *	KPPW0296	0
3.	1" Prop Extension - 912ULS Sensenich Composite Prop	KAPW0034	1

* Referenced from Spinner Assembly.

RRMS S-19 VENTERRA ROTAX 912ULS OPTIONAL AIRBOX ASSEMBLY

MD5464



RANS S-19 VENTERRA - ROTAX 912ULS - Optional Airbox Assembly

RANS Part Assembly # KAPW0055 (with Airbox), KAPW0056 (without Airbox)

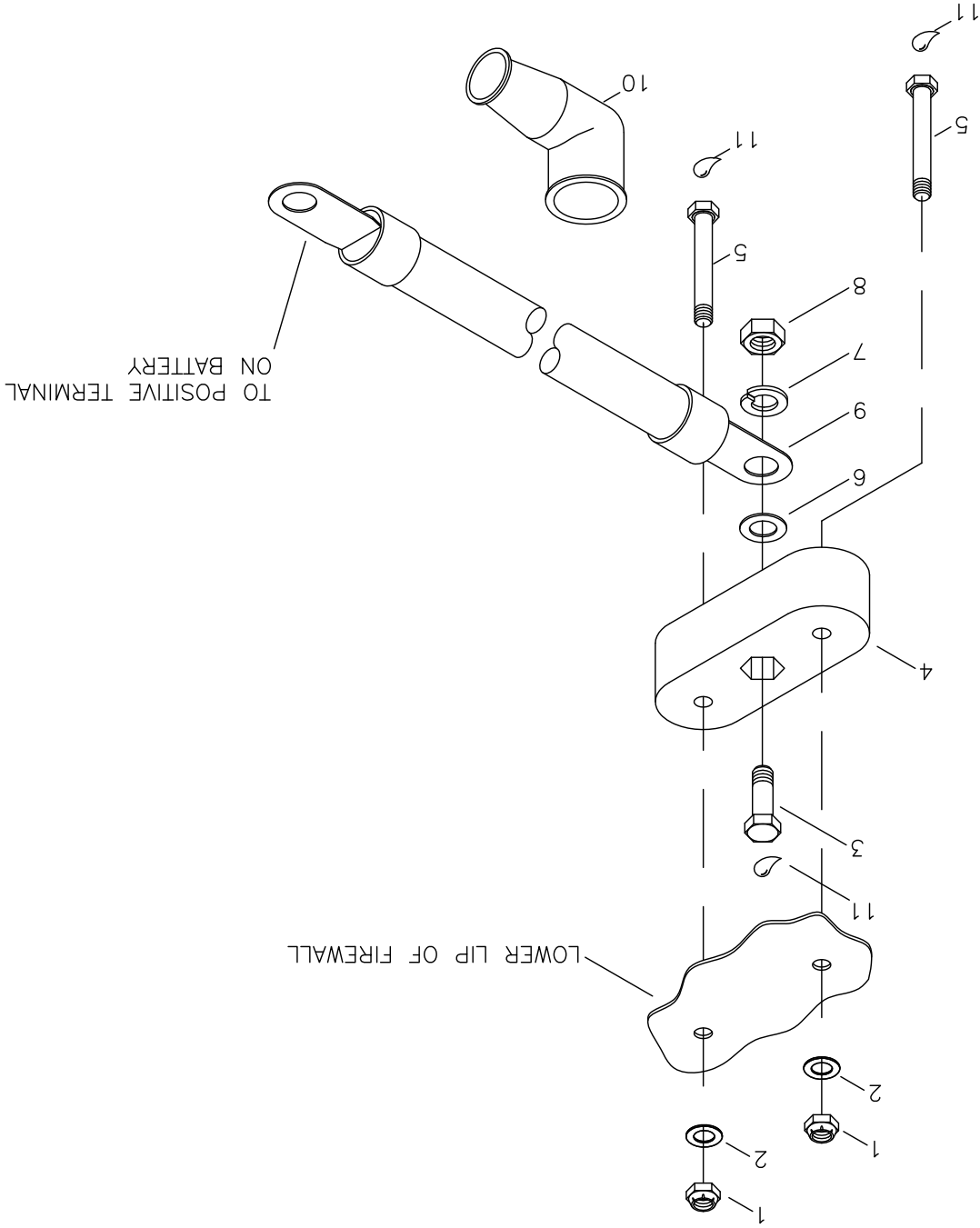
#	DESCRIPTION	PART NUMBER	QUANTITY
1.	Rotax Airbox Assembly - OPTIONAL **	KSPW0115	1
2.	Airbox Support Bracket	KPPW0264	1
3.	Air Filter	SN-2540	1
4.	Heat Exchanger	KPPW0263	1
5.	3/16" Bolt - Drilled Head	AN3H-4A	3
6.	1/4" Thick Washer	AN960-416	3
7.	Safety Wire *	----	0
8.	Hose Clamp - 2 3/4"	5-5236	4
9.	2-1/2" Cushioned Clamp	MS21919-DG40	1
10.	2-1/2" Duct Hose	KSPW0087	5 ft.
11.	Intake Splice Tube	KPPW0281	1
12.	6MM Bolt	M6x20 BOLT	1
13.	Control Cable	4-336	1

* Builder Supplied

** Optional - available from RANS Parts Dept

RRMS S-19 VENTURA ROTAX 912ULS OPTIONAL REMOTE CHARGING POST INSTALLATION

MD5501



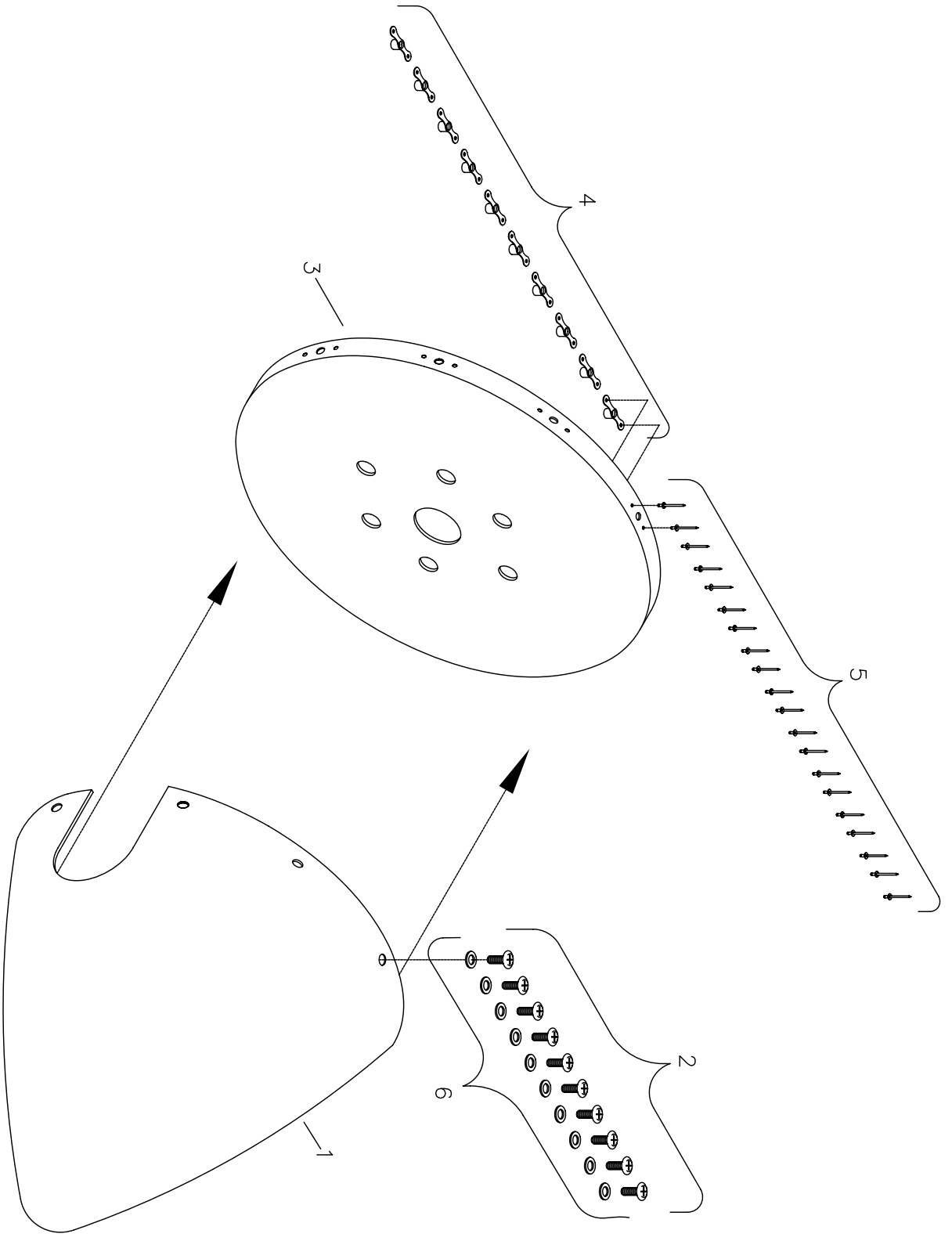
KPES0029

#	DESCRIPTION	PART NUMBER	QUANTITY
1.	3/16" Steel Shear Nut	AN364-1032C	2
2.	3/16" Thin Washer	AN960-10L	2
3.	1/4" Plain Bolt	1/4 X 1 BOLT	1
4.	Isolator Block	KPES0026	1
5.	3/16" Bolt	AN3-7A	2
6.	1/4" Thick Washer	AN960-416	1
7.	1/4" Lock Washer	AN935-416L	1
8.	1/4" Plain Nut	AN345-416	1
9.	Remote Battery Charger Cable	KAES0017	1
10.	Terminal Boot	MS25171-3S	1
11.	Silicone Seal *	-----	0

* Builder Supplied

14 – SPINNER & COWLING INSTALLATION

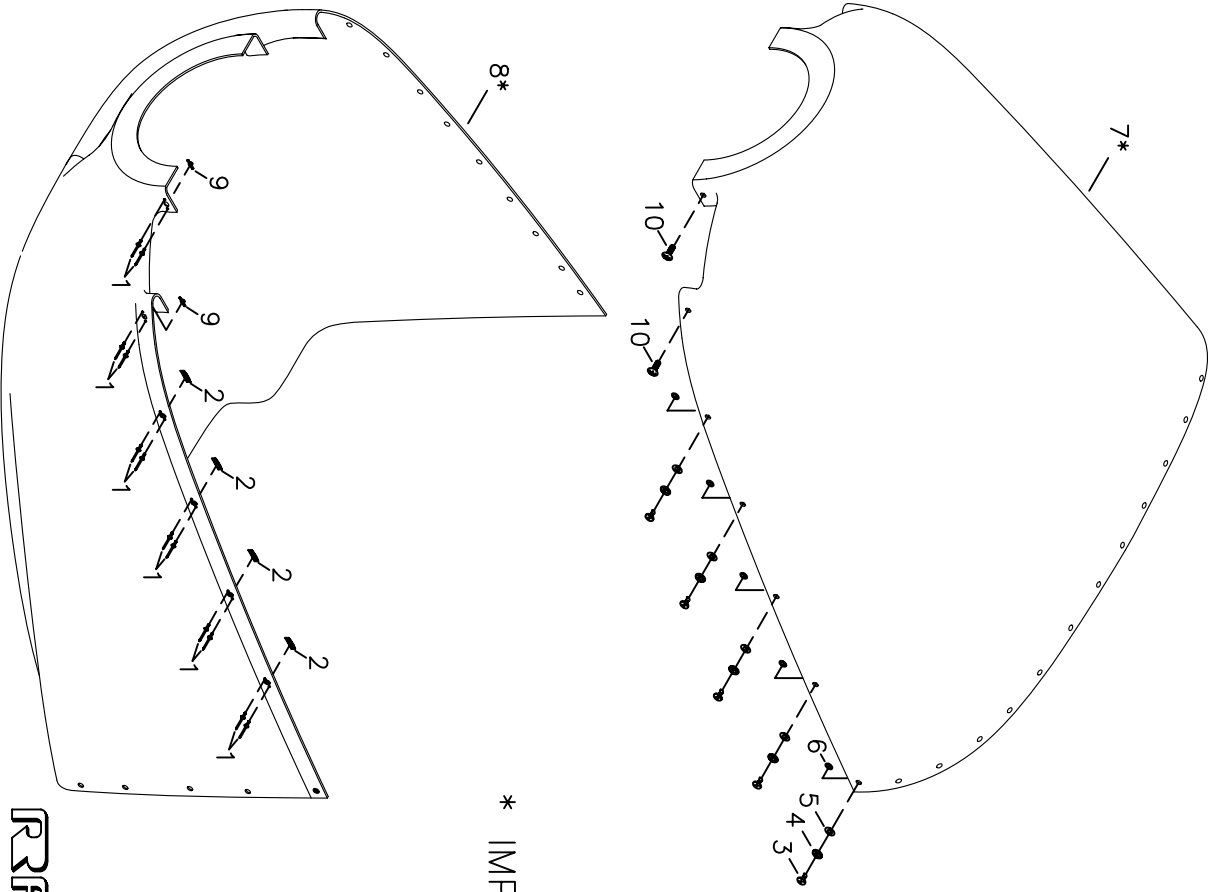
ROTAX 912ULS - SPINNER ASSEMBLY	14-01 - 14-02
ROTAX 912ULS - COWLING ASSEMBLY & INSTALLATION	14A-01 - 14A-02
ROTAX 912ULS - OIL CHECK DOOR INSTALLATION.....	14A-03 - 14A-04
ROTAX 912ULS - OPTIONAL LANDING LIGHT INSTALLATION	14B-01 - 14B-02



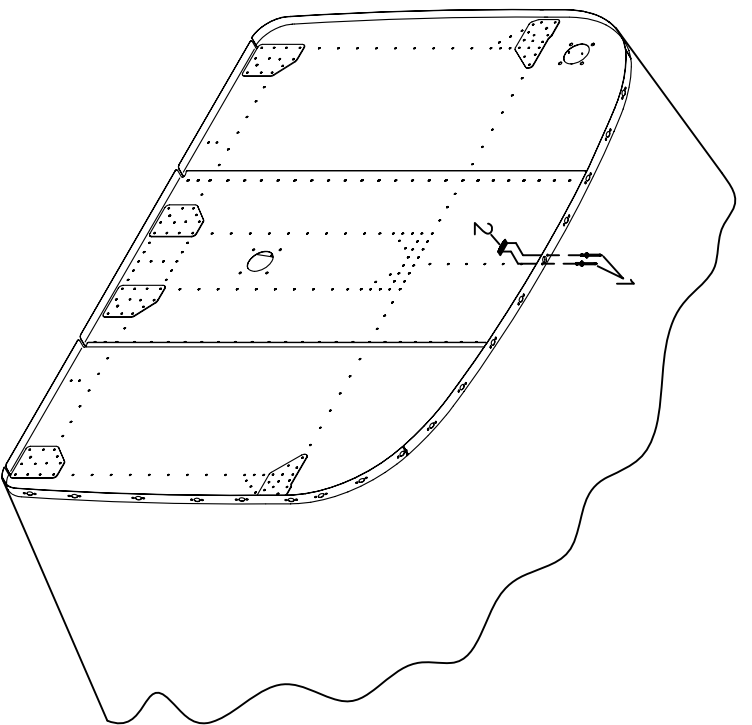
RRR S-19 VENTERRA
ROTAX 912ULS
SPINNER ASSEMBLY

MDS146

#	DESCRIPTION	PART NUMBER	QUANTITY
1.	Spinner Dome - 11.3"	KSPW0095	1
2.	Pan Head Phillips Bolt	KSHW0071	10
3.	Spinner Backing Plate - 11.3" - 912	KPPW0296	1
4.	3/16" Nut Plate	K-1000-3	10
5.	3/32" Aluminum Rivet	40APR1/4	20
6.	3/16" Thin Washer	AN960-10L	10



* IMPORTANT: INSTALLATION OF COWLING
 REQUIRES ENGINE, PROP EXTENSION
 AND SPINNER BACKING PLATE TO BE
 INSTALLED.



RRRROTAX S-19 VENTERRA
ROTAX 912U/LS
COWLING ASSEMBLY AND INSTALLATION

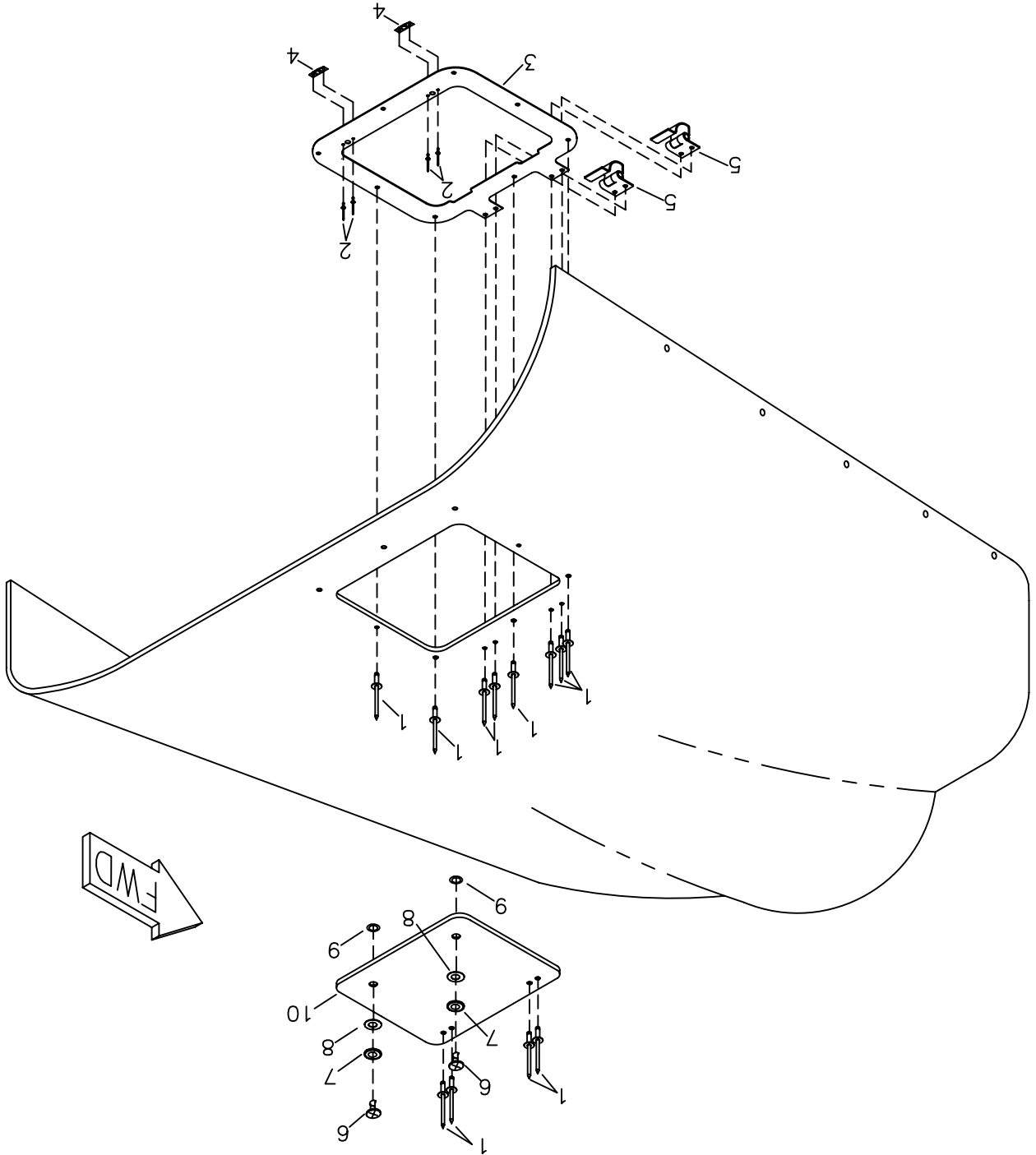
MD5141

#	DESCRIPTION	PART NUMBER	QUANTITY
1.	3/32" Aluminum Rivet	40APR1/4	82
2.	1/4 Turn Receptacle	#302	37
3.	1/4 Turn Stud *	#240	4
3.	1/4 Turn Stud *	#200	4
3.	1/4 Turn Stud *	#180	37
4.	Rubber Washer	#201	37
5.	Wear Washer Nylon	#103	37
6.	Snap Ring	#101	37
7.	S-19 Upper Cowling - Fiberglass (912uls)	KPCW0040-F	1
8.	S-19 Lower Cowling - Fiberglass (912uls)	KPCW0041-F	1
9.	#8 Nut Plate	MS21047-08	4
10.	#8 Trusshead Screw	AN515-8R7	4

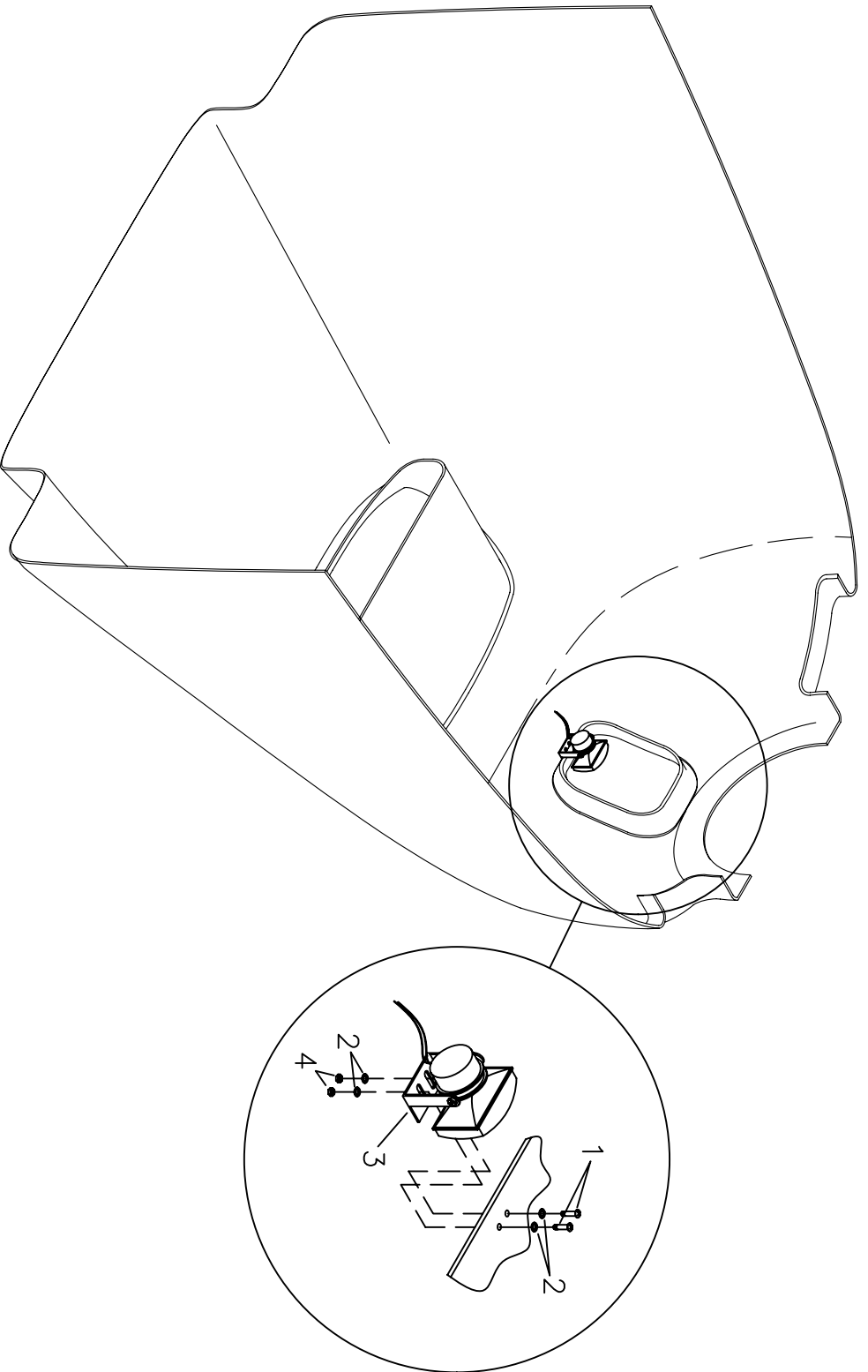
* Use as needed for secure attachment

RRND8 S-19 VENTERA ROTAX 912ULS OIL CHECK DOOR INSTALLATION

MDS140



#	DESCRIPTION	PART NUMBER	QUANTITY
1.	1/8" Aluminum Rivet - Avex	1691-0410	18
2.	3/32" Aluminum Rivet	40APR1/4	4
3.	Reinforcement Ring - Maintenance Hatch	KPCW0015	1
4.	1/4 Turn Receptacle	#302	2
5.	Oil Door Hinge	KSHW0053	2
6.	1/4 Turn Stud	#180	2
7.	Rubber Washer	#201	2
8.	Wear Washer Nylon	#103	2
9.	Snap Ring	#101	2
10.	Maintenance Hatch	KPCW0036	1



REEDER S-19 VENTERRA
ROTAX 912ULS
OPTIONAL LANDING LIGHT INSTALLATION

MD5498

#	DESCRIPTION	PART NUMBER	QUANTITY
1.	#8 Trusshead Screw	AN515-8R7	2
2.	#8 Brass Washer	AN960-B8	4
3.	Landing Light	KSES0068	1
4.	8-32 Shear Nut	AN364-832A	2