



Large tail surfaces assure positive control at low speeds and great yaw and pitch stability. Electric trim pitch is standard.



Seats are high on comfort and low on weight due to “tension field” construction. They also adjust fore & aft in flight and have 4 recline settings. Optional headrest shown.

RANS[®]

S-21 OUTBOUND

All metal, all purpose.



RANS' custom made two-piece main landing gear legs allow for camber & toe adjustment, and save 15 pounds!



Optional landing gear fairings are made of impact resistant thermal formed ABS.





Above: Outstanding visibility includes the skylight and panoramic view in level cruise, and the lexan lower door panels left clear.

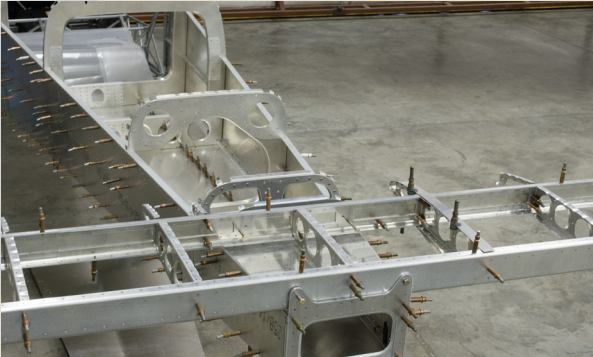
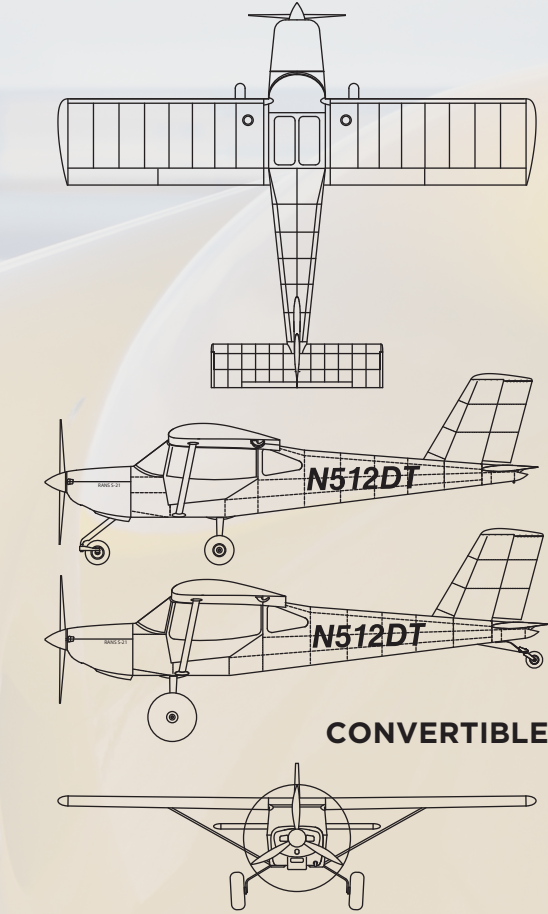
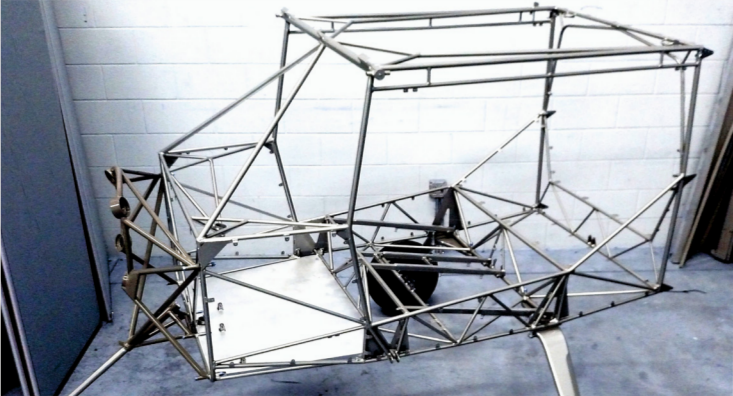
BIG DOORS, EASY ENTRY, GREAT VIEW!

Side-by-side seating allows for large interior volume without a high drag or visibility penalty. The generous cabin width is only at the occupant’s shoulder, tapering gracefully to an efficient teardrop shape. With a low instrument panel height, a skylight, and big windows, exceptional visibility is achieved.

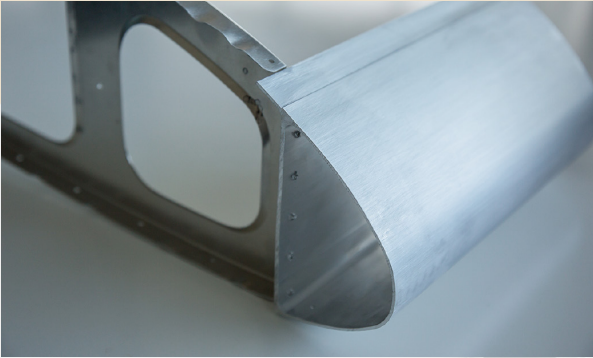
Right: A welded steel cage comes powder coated as all steel parts, and provides fast assembly and crew safety.

Lower right: Full Lexan doors allow for a variety of paint schemes to include lower windows.

Below: Depending on engine choice, up to 180 pounds can be carried in the Outbound’s 24 cubic foot baggage compartment.



Typical Outbound construction uses CNC machining with final hole size. Most parts come de-burred and ready to cleco, check, and rivet.



Custom aluminum extruded spars make for fast assembly times.

SPECS AND PERFORMANCE

SPECIFICATIONS	SLSA ROTAX 912ULS	SLSA TITAN 340
Wing Span	28 ft.	28 ft.
Wing Area	141 sq. ft.	141 sq. ft.
MAC	5.06 ft	5.06 ft
Aspect	5.05	5.05
Length	22.41 ft.	22.41 ft.
Height Tailwheel	78”	78”
Height Trike	102.65”	102.65”
Cockpit Width	46.5 in.	46.5 in.
Headroom	40 in.	40 in.
Legroom	46 in.	46 in.
Number of Seats	2	2
Doors	2	2
Landing Gear***	F/TDTK	F/TDTK
Baggage Volume	24 cu. ft.	24 cu. ft.
Baggage Capacity	80 lbs.	180 lbs.
Fuel Capacity	43.5 gal. us.	43.5 gal. us.

POWER PLANT

Output	100hp	180hp
Oil Capacity	3 qt.	8 qt.
Coolant Capacity	2.5 qt.	n/a
Propeller Diameter	75 in.	80 in.
Propeller Type	Gr. Adj.	Fixed
Fuel G.P.H	5.5	7

WEIGHTS & LOADINGS****

Gross Weight	1320 lbs. (1600 lbs.*)	1320 lbs. (1800 lbs.*)
Empty Weight	820 lbs.	985 lbs.
Useful Load	500 lbs. (780 lbs.*)	335 lbs. (815 lbs.*)
Wing Loading	9.36 lbs./ft²	13.47 lbs./ft²
Power Loading	13.2 lbs./hp	10.55 lbs./hp
Limit Loading	+6 /-2	+6 /-2

PERFORMANCE****

Take Off Roll	350 ft.	325 ft.
Rate of Climb	850 fpm	1500 fpm
Service Ceiling	12,500 ft.	14,000 ft.
Vc	120 mph	155 mph
Vne	160 mph	215 mph
Stall Clean	46 mph	50 mph
Stall Flaps	38 mph	40 mph
Roll Rate	100°/sec	100°/sec
Glide Ratio	9:5	9:5
Landing Roll	375 ft.	375 ft.
Endurance**	6.75 hrs.	5 hrs.
Range	852 miles	750 miles

* EAB
** Plus .5 hr. reserve
*** F/TDTK= Fixed, Convertible/ Taildragger or Trike
**** Approximate